



## RX 60 Technical data.

Electric forklift trucks

---

RX 60-40

---

RX 60-45

---

RX 60-50

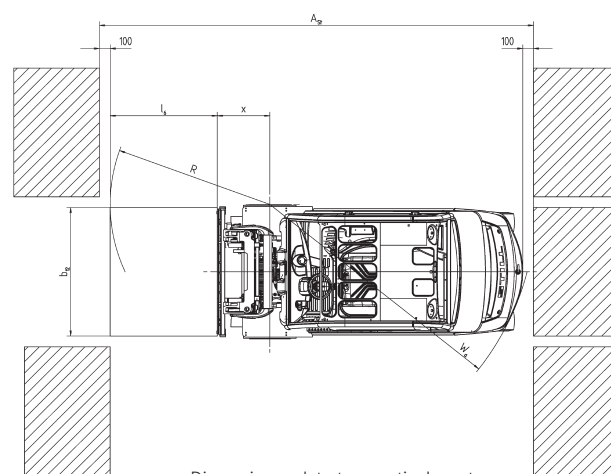
---

RX 60-50/600

---



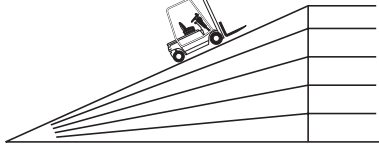





RX 60-40 / 45 / 50				Telescopic mast		Triplex mast	
	Rated lift	h <sub>3</sub>	mm	2980 - 3680		4080 - 4880	4330 - 7180
	Overall height	h <sub>1</sub>	mm	2300 - 2650		2850 - 3250	2250 - 3200
	Free lift Form “B”	h <sub>5</sub>	mm	160		160	1462 - 2412
	Free lift Form “A”	h <sub>5</sub>	mm	160		160	1504 - 2554
	Greatest height Form “B”	h <sub>4</sub>	mm	3987 - 4687		5087 - 5887	5416 - 8266
	Greatest height Form “A”	h <sub>4</sub>	mm	3987 - 4687		5087 - 5887	5437 - 8287
	Forward tilt	a	°	3			
	Back tilt	b	°	9			
	Overall length	L <sub>2</sub>	mm	2886			
	Load distance	x	mm	525			
	Working aisle width	A <sub>st</sub>	mm	(1000 x 1200) 4208 // (1200 x 800) 4408			
	RX 60-40	Tyres	v/h		250/70-15 // 200/75-9		345/45-15 // 200/75-9
Track		v/h	mm	1030 // 920		1104 // 920	
Greatest width		B	mm	1256		1399	
Fork locations, centre to centre			mm	191 368 572 673 876 978			
RX 60-45 / 50	Tyres	v/h		345/45-15 // 200/75-9			
	Track	v/h	mm	1104 // 920			
	Greatest width	B	mm	1399			
	Fork locations, centre to centre		mm	191 368 572 673 978 1080			
RX 60-50 / 600	Rated lift	h <sub>3</sub>	mm	2780 - 4680			4030 - 6880
	Overall height	h <sub>1</sub>	mm	2300 - 3250			2250 - 3200
	Free lift Form “A”	h <sub>5</sub>	mm	160		160	1230 - 2180
	Greatest height Form “A”	h <sub>4</sub>	mm	3887 - 5787			5095 - 7945
	Forward tilt	a	°	3			
	Back tilt	b	°	6			
	Overall length	L <sub>2</sub>	mm	2963			
	Load distance	x	mm	535			
	Working aisle width	A <sub>st</sub>	mm	(1000 x 1200) 4248 // (1200 x 800) 4500			

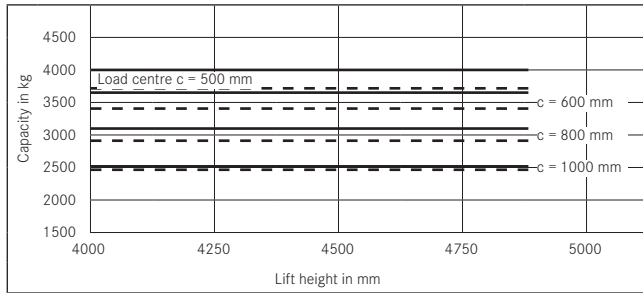
**Gradients,** maximum distance that can be driven in 60 minutes

Example: An RX 60-40 with a load of 4,000 kg and a gradient of 13% can drive a distance of 215m 10 times per hour.

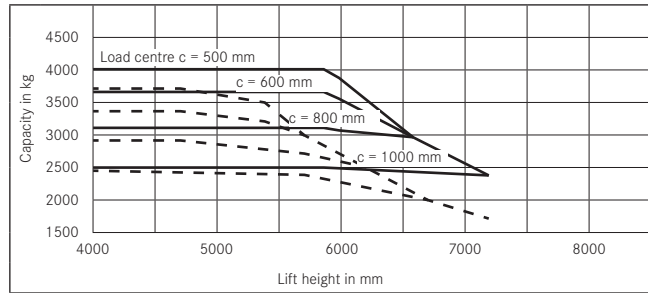
Unladen		RX 60-40	RX 60-45	RX 60-50	RX 60-50/600
	23%	1850 m	1470 m	1430 m	-
	20%	2700 m	2290 m	2030 m	1850
	15%	5390 m	5060 m	4350 m	4140
	10%	7180 m	6930 m	6700 m	6250
	5%	11660 m	11170 m	10720 m	10260
Laden					
	13%	2150 m	1590 m	1380 m	-
	9%	5030 m	4200 m	3620 m	3440
	7%	6070 m	5750 m	5380 m	5150
	5%	7580 m	7130 m	6670 m	6440

(dry rough concrete surface = Coefficient of friction 0.80)

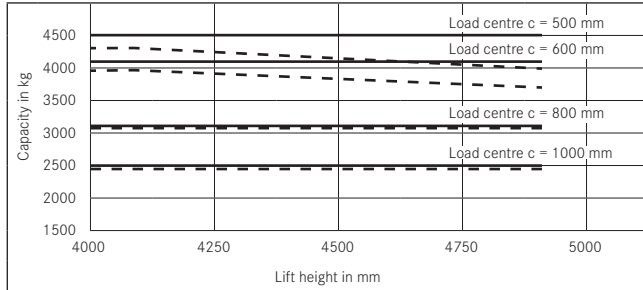
Capacities RX 60-40 Tele/HiLo mast



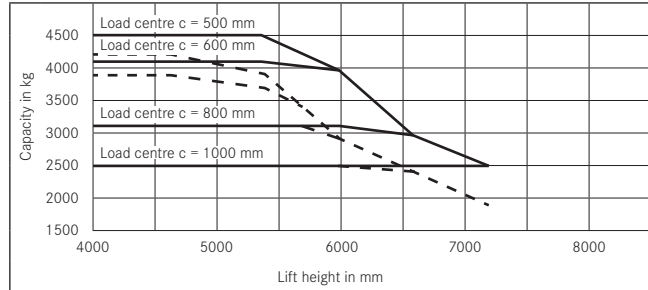
Capacities RX 60-40 with triplex mast



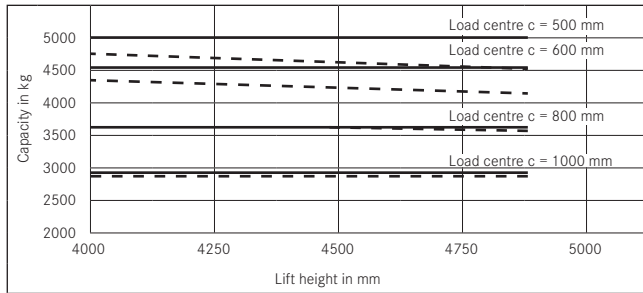
Capacities RX 60-45 Tele/HiLo mast (single tyres)



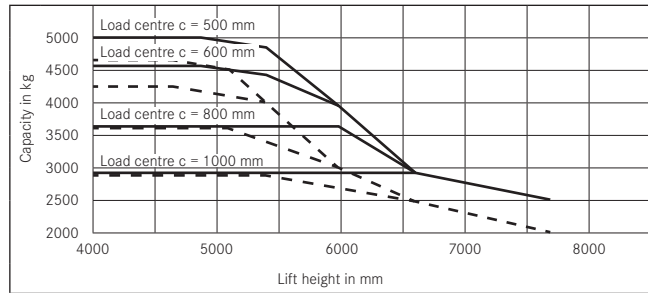
Capacities RX 60-45 Triplex mast/single tyres



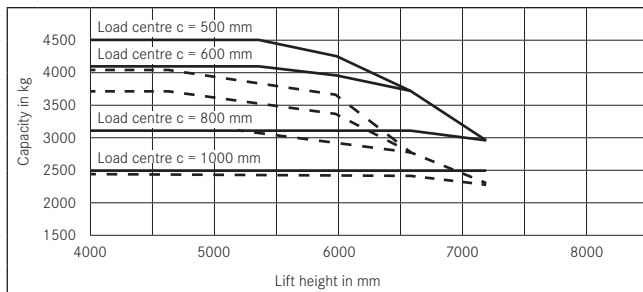
Capacities RX 60-50 Tele/HiLo mast



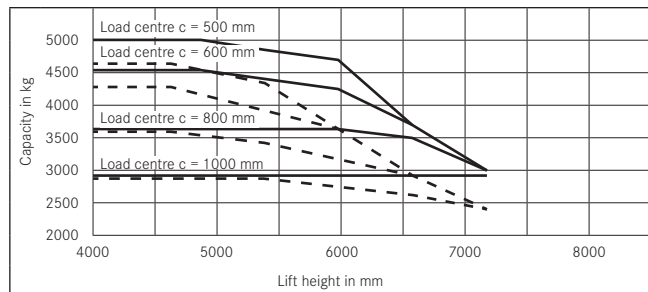
Capacities RX 60-50 Triplex mast/single tyres



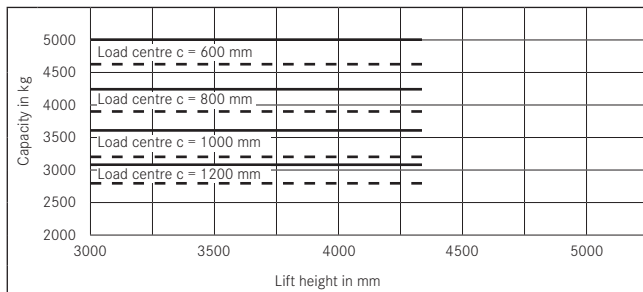
Capacities RX 60-45 Triplex mast/dual tyres



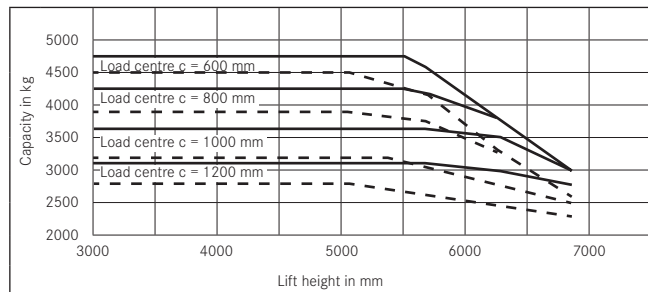
Capacities RX 60-50 Triplex mast/dual tyres



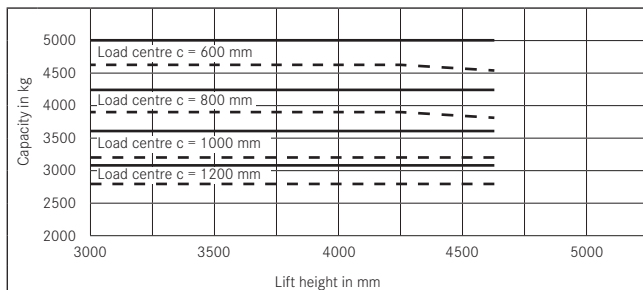
Capacities RX 60-50/600 Triple mast to BH2350



Capacities RX 60-50/600 Triple mast from BH2400



Capacities RX 60-50/600 Tele-mast to BH3250



— without Sideshifter  
 --- with Sideshifter

## Driver's compartment.

The large footwell featuring an inclined floor plate and anti-slip lining provides quick and convenient entry and exit and a relaxed leg position when driving.

The adjustable steering column with its small steering wheel is ergonomically sound, requiring minimal steering movements from the driver. The automotive style pedal layout can be replaced by a dual pedal arrangement if required.

The drive direction switch on the valve lever (lift and lower) allows the driver to change direction without releasing his grip, thus reducing fatigue, even on long shifts.

The fully graphic display is heated to ensure that all essential information (including time, battery charge state, maintenance intervals, etc.) remains clearly visible under all conditions - even in extreme applications such as cold stores, or all-weather indoor/outdoor working.

The entire truck is under constant on-board diagnosis. With 5 selectable drive programs the driver can match the driving characteristics of the RX 60 to the application or his personal preferences. Each program can be precisely matched to the application profile in order to achieve optimum economy and load turnaround.

The driver's compartment of the RX 60 provides generous head room even for tall drivers, with good all-round vision thanks to the large viewing panels in the roof, very slim overhead guard legs and high seating position.

## Blue-Q energy optimisation.

- Activate Blue-Q energy saving mode on the truck at the push of a button.
- Energy saving due to intelligent optimisation of the drive characteristics without impairing the work process.
- Intelligently switches off electrical consumers.
- A saving in energy consumption of up to 20% depending on the application and the truck's equipment.

## Safety.

In conjunction with the mechanical parking and service brake, the RX 60 brakes automatically when the drive pedal is released, guaranteeing safe use at all times. The truck will also hold its position on a gradient without the need to depress the footbrake, further enhancing safety. The RX 60's side battery change can be carried out using a hand pallet truck, low lift pallet truck or forklift truck. This not only gives significant time savings compared to a conventional hoist, but makes the battery changing operation much safer. The risks of operator injury or truck damage are considerably reduced.

## Service.

The maintenance interval of the RX 60 is 1000 operating hours or 12 months. These intervals save time and maintenance costs - especially with single-shift operation, where 1000 hours roughly corresponds to annual operating hours, enabling the maintenance and UVV safety checks to be carried out at the same time. Fast diagnosis via a notebook computer and easily accessible maintenance components, together with readily available parts, guarantee short service times and maximum uptime.

## Drive.

The energy-efficient, noise-optimised three-phase drive unit of the RX 60 acts on the front wheels. High traction power

and driving dynamics, even when climbing ramps or operating on uneven ground, ensure a high turnaround of goods. The 'BOOST' function of the RX 60 is an innovative feature which, when required, calls up maximum torque from the drive motors. Maximum thrust is therefore always available - for example, at kerbs or when pushing pallets.

The maintenance-free, efficiency optimised three-phase drive guarantees a long battery operating life. Thanks to its IP 54 enclosure the entire drive system is protected against the ingress of dirt, dust and moisture, so that even the most inhospitable applications pose no problem.

In addition to all this, electrical regenerative braking means the motors feed back up to 15% of the energy into the battery when the drive pedal is released, increasing the work available from a battery charge by up to 1.5 hours. Interim battery charging, or even changing, is often not necessary. The STILL controller ensures sensitive driving response with optimal utilisation of energy. It also enables the truck to be held on ramps without using the maintenance-free multi-disc brakes, for greater safety and driving comfort. The power electronics are protected within the counterweight and the heat from the controller is dissipated into the counterweight over a large area. This arrangement provides very good cooling without additional fans or filters and makes operating the RX 60 reliable and quiet.

## Electrical system.

The RX 60 features digital control with two independent CAN bus systems which ensure that the drive train is not affected by minor electrical failures elsewhere on the truck, while the drive control unit has dual microprocessor monitoring to ensure safe operation. A pre-prepared wiring harness means that auxiliary electrical equipment can be fitted quickly and easily.

## Mast.

A new generation of optimised visibility masts has been specially developed for this truck. The new concept is based on an outer mast C-section with hoist cylinders positioned behind the mast profiles. Depending on the application, the telescopic or triplex construction offer the following:

- Telescopic: an inexpensive mast design suitable for many applications, with full visibility through the mast.
- Triplex: for use where there are low doorways but high lift heights, to allow utilisation of warehouse space right up to the roof. Here too, there is a clear view through the mast due to the use of two free-lift cylinders.

## Hydraulic system.

The speed of the AC pump drive is demand controlled and is precisely regulated by the dynamic servo assistance through the valve lever or the steering wheel movement. This ensures longer use from a battery charge. Sensitive operation of hydraulics increases working safety thanks to positioning to the nearest millimetre. The hydraulics also improve energy consumption by:

- The high efficiency of the hydraulic pump. A noise reduced internal gear pump specially developed for this truck is used.
- The replacement of the pressure make-up valves with load holding valves. The priority valve for the steering is directly connected to the pump so that hydraulic interfaces and hoses are not required. This guarantees a safer, cleaner operation.



## **Your contact**

STILL GmbH  
Berzeliusstraße 10  
D-22113 Hamburg  
Telephone: +49 (0)40/73 39-2000  
Telefax: +49 (0)40/73 39-2001  
[info@still.de](mailto:info@still.de)

**For further information please visit:**  
**[www.still.de](http://www.still.de)**

STILL Materials Handling Ltd.  
Aston Way, Leyland  
Lancashire PR26 7UX  
Telephone: +44 (0)1772 644300  
Telefax: +44 (0)1772 644303  
[info@still.co.uk](mailto:info@still.co.uk)

**For further information please visit:**  
**[www.still.co.uk](http://www.still.co.uk)**