

Forklift - Still RX20-15



Forklift - Still RX20-15

WKH5.629



Elektric



5220mm



1500kg



24232

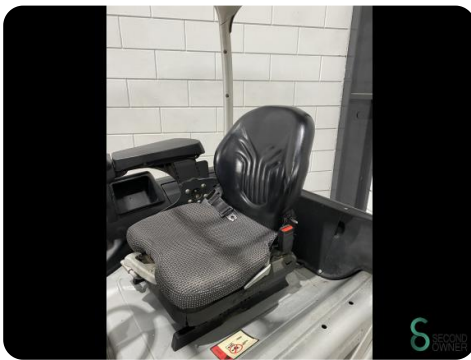
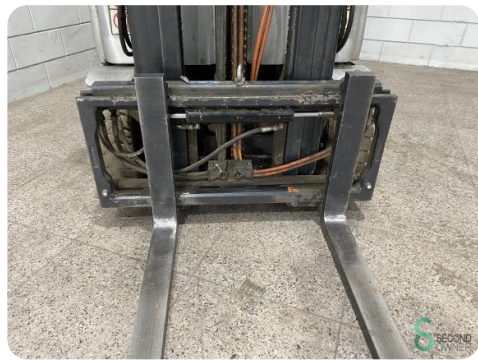
Brand Still
Model RX20-15
Year

Specifications

Drive	Elektric
Capacity	625Ah
Brand/Type	Benning
Battery voltage	48V
Battery year of construction	2017
Inspection valid until	03.2025

Dimensions

Length	2000
Width	1150
Height	2270
Weight	3151





Havenweg 6
6603AS Wijchen

T: +31 6 11462913
E: Koen@secondowner.com
W: <https://secondowner.com>

